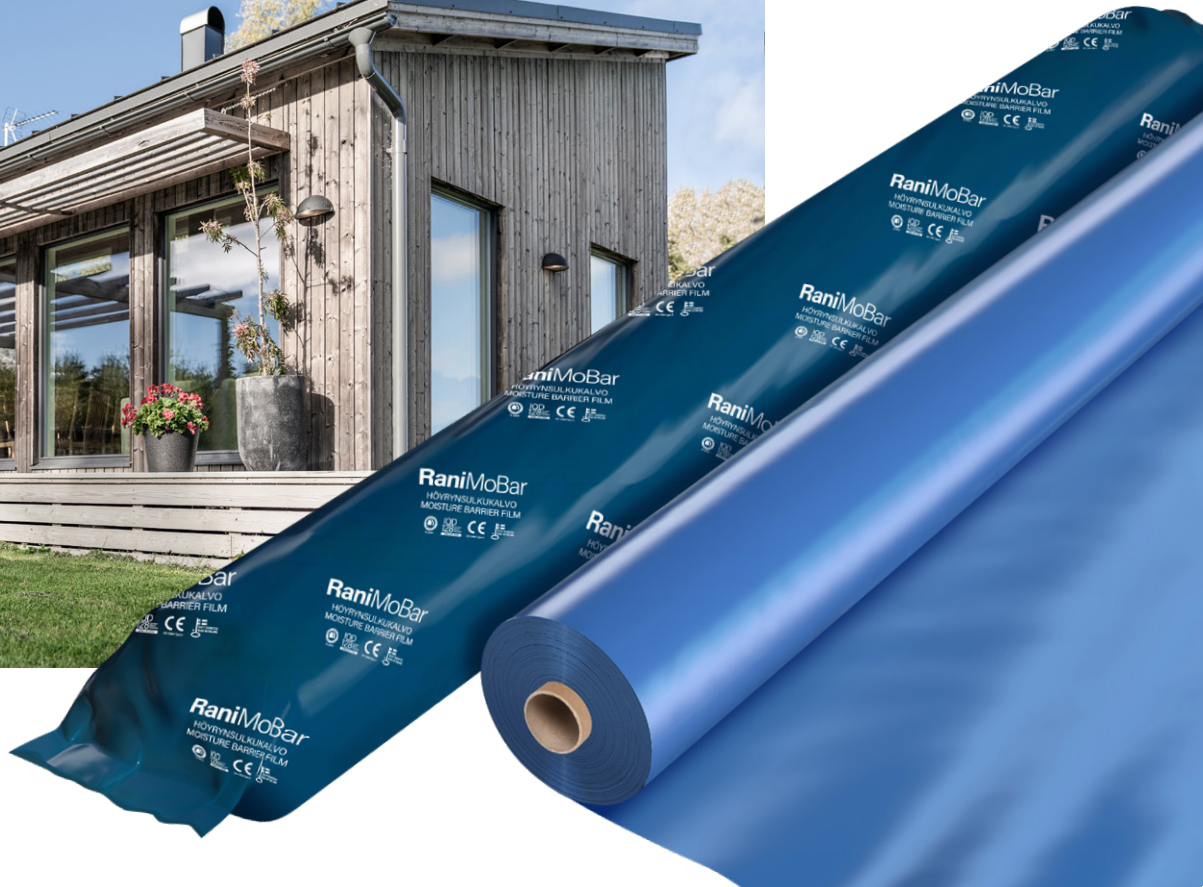


High quality
moisture barrier film

RaniMoBar



Smart packaging solutions



**MADE IN
FINLAND**



**CALCULATED SERVICE
LIFE +50 YEARS**



Protects your house from damage due to moisture

Our premium moisture barrier film provides structures with long-term and effective protection against damage due to moisture. The moisture barrier film is installed to prevent moisture from indoor air entering external structures. Our RaniMoBar construction film has a calculated service life of over 50 years. The film is excellent for use in cold climates.

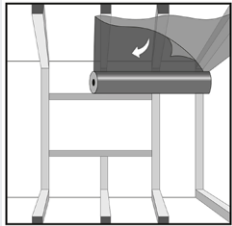
Moisture barrier film made in Finland from high-quality raw material

THIRD-PARTY ASSURED AND QUALITY LABELED CONSTRUCTION FILM

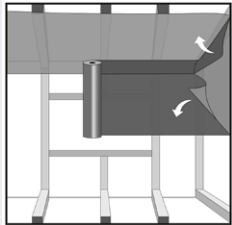
The RaniMoBar film is SINTEF approved and manufactured according the IQD120 quality document. This confirms that it has undergone rigorous product tests and recurring audits, performed by a third party as proof of its extraordinary durability and mechanical strength. RaniMoBar is CE-marked. All RaniMoBar moisture barrier films are traceable and labelled with the manufacturer's name, certification symbols and manufacturing number.



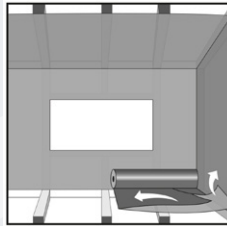
How to use the film



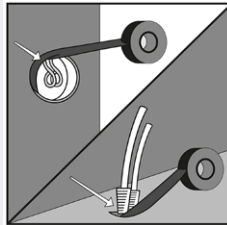
- 1** **Installation on ceiling frame**
Open the folded film to its full width. Lift and fasten against the ceiling beams so that there is at least 20 cm of overlap against the outer wall.



- 2** **Installation on wall frame**
Measure the required length from the roll (leave required overlap). Lift the film against the outer wall so that the overlap is against the ceiling. Attach the film to the frame posts. Also attach around windows and doors. If necessary, seal the seams with a type-approved moisture barrier tape.



- 3** **Installation on wooden floor frame**
Attach the moisture barrier film to the floor beams in the same way as to the ceiling. Ensure that there are overlaps.

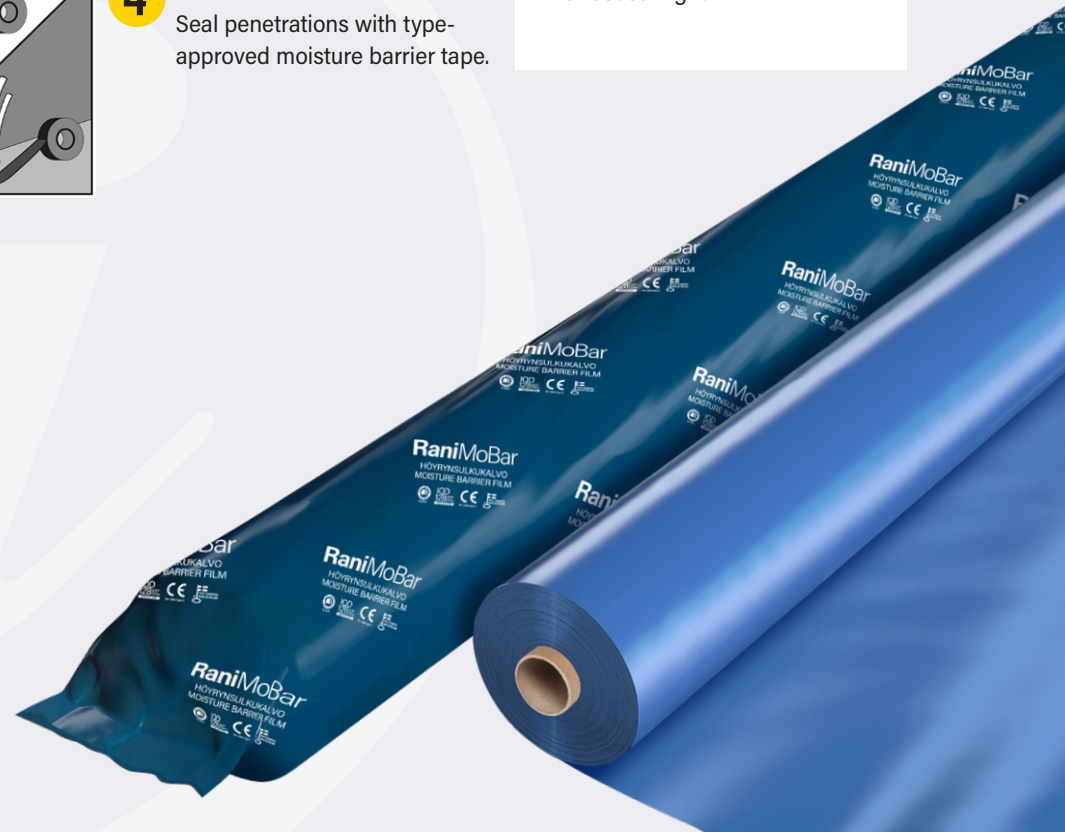


- 4** **Penetrations**
Seal penetrations with type-approved moisture barrier tape.

To consider

Moisture barrier film should not be used on walls and floors in which moisture or water insulation is used (moist/wet rooms). Store moisture barrier film out of direct sunlight.

After completing all installations, check that the moisture barrier film is undamaged. If there is damage, tighten it with type-approved tape.



Be climate smart

After end use, all our films should preferably be recycled. Our film is made of LDPE (low-density polyethylene) and must be recycled in the LDPE recycling stream. Please consult your local recycling organization for more detailed information.

Packaging materials of our films, such as cores, pallets and protective film should be recycled in appropriate waste streams. Plastic is a valuable raw material after its end use and most plastic is recyclable for producing new raw material or energy. Please remember to recycle your plastic waste.

Material for the product

- > LDPE

Degradation of the product

- > non-degradable

Recycling mark for the product

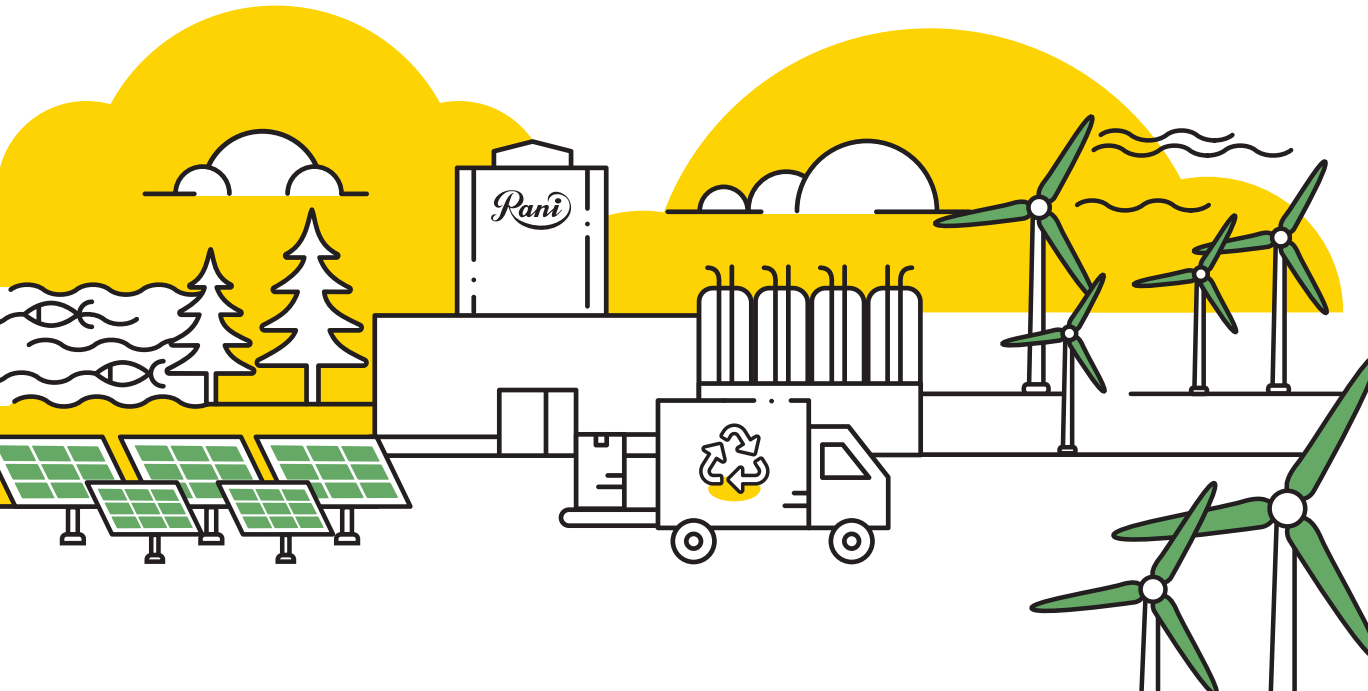


Toxicity of the product

- > non-toxic

Recyclability of the product

- > recyclable





WE  SMART PACKAGING



Rani Group is a family-owned international group, which owns nine factories in five countries. The group has turnover of more than EUR 250 million and exports products to 50 countries. We are a stable, family-owned company with the goal of being one of the most successful companies in the packaging industry. Rani Plast was founded in 1955.

www.raniplast.com